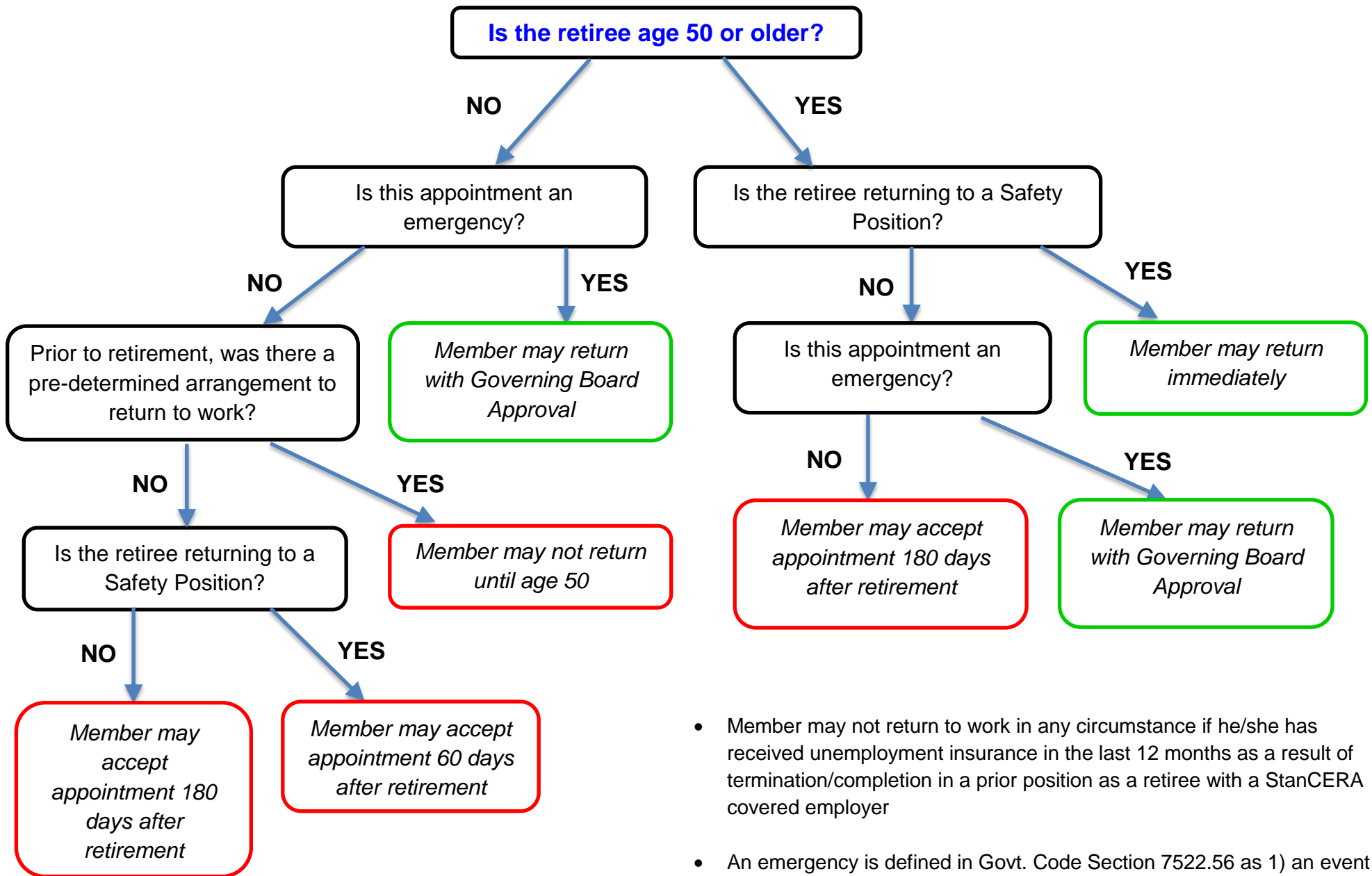


PEPRA and IRS Decision Tree for Rehiring Retired **Safety** Members



- Member may not return to work in any circumstance if he/she has received unemployment insurance in the last 12 months as a result of termination/completion in a prior position as a retiree with a StanCERA covered employer
- An emergency is defined in Govt. Code Section 7522.56 as 1) an event that would stop public business or 2) the appointment is necessary to fill a critically needed position